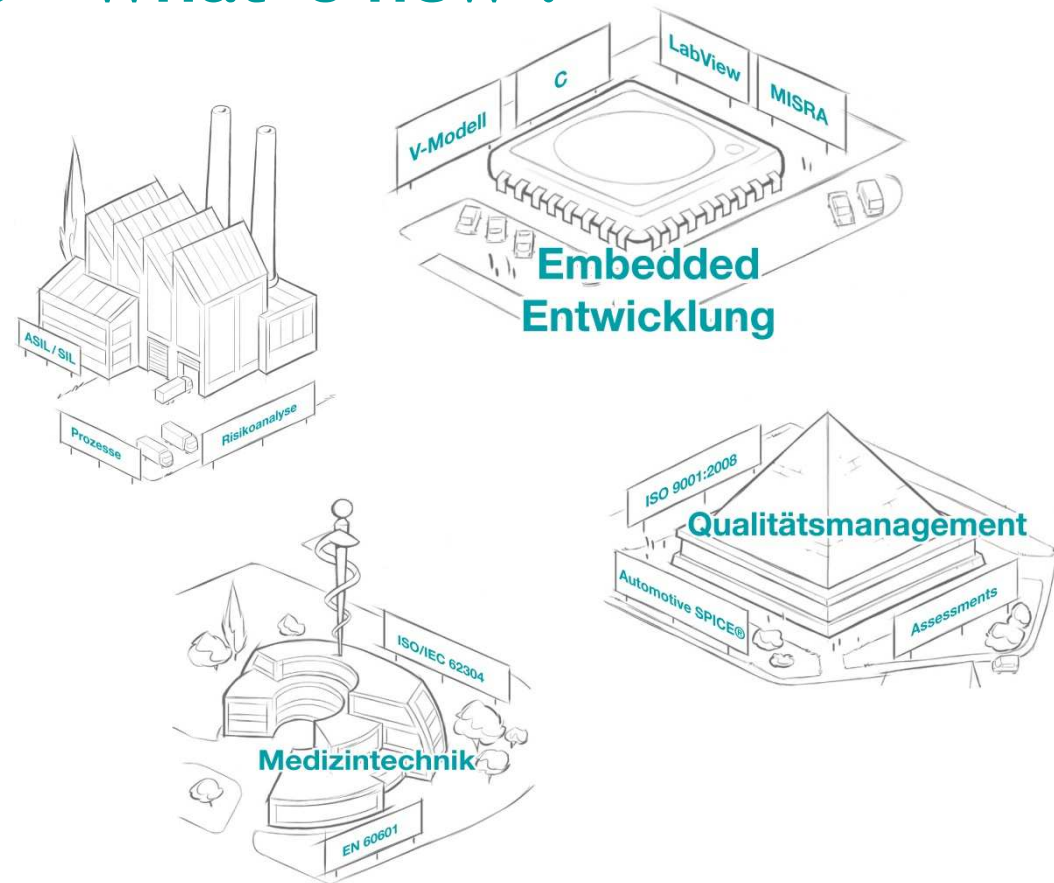


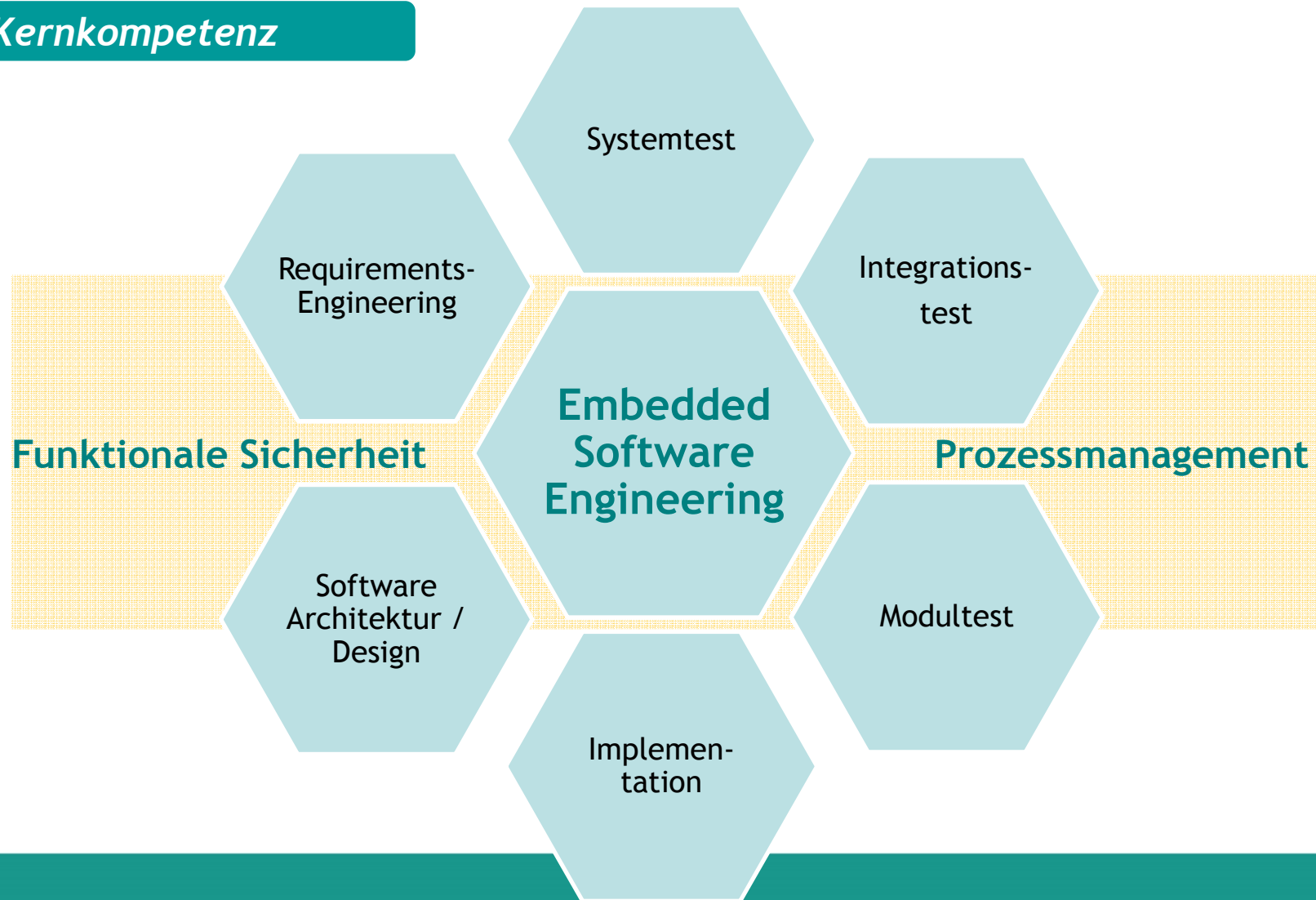
Automotive SPICE 3.0 - What`s new ?

tecmeta GmbH

Flörsheim, 20.09.2016



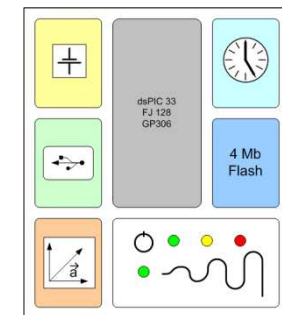
Kernkompetenz



Embedded Entwicklung + Test in verschiedensten Industrien

Kompetenz in sicherheitsrelevanter embedded Entwicklung + Test z.B.:

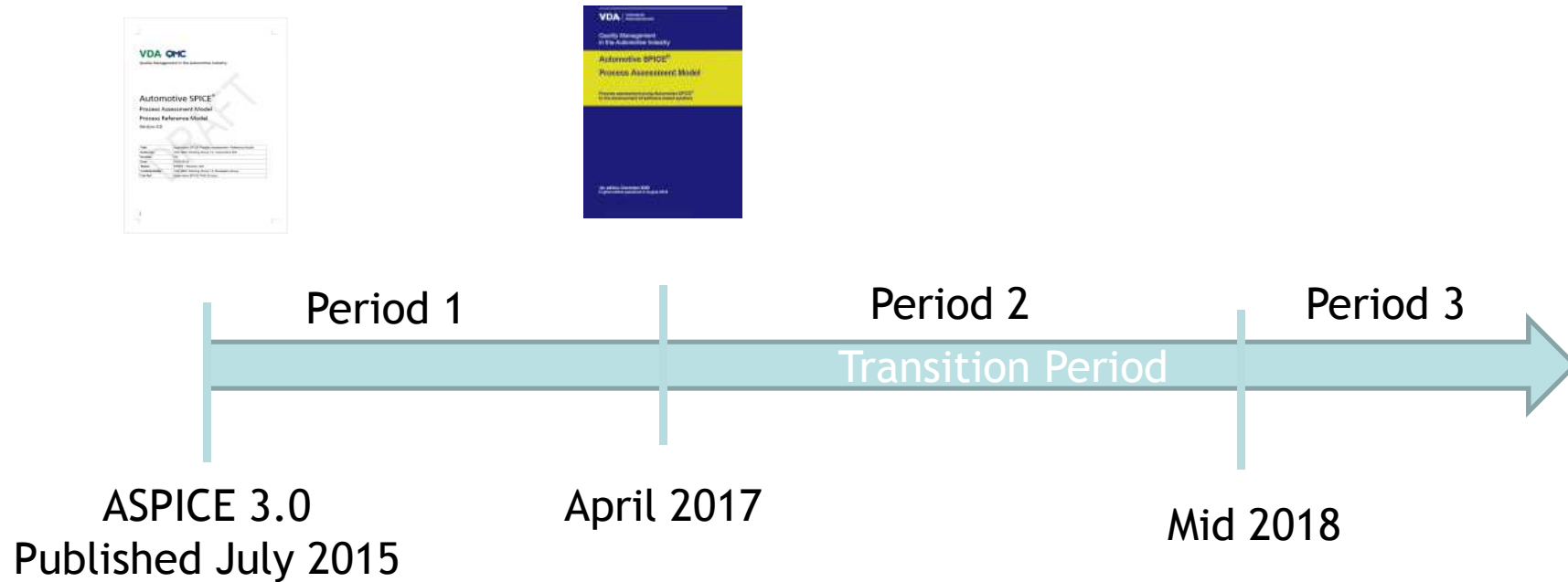
- Beteiligung an Steuergeräteentwicklung Automotive
- Beschleunigungs- und Geber-Sensorik - **Windkraftanlagen**
- Sicherheitsoption einer Motion-Steuerung - **Automatisierungsindustrie**
- Firmware für ein Vibrationsdosimeter - **schwere Nutzmanmaschinen**
- Blutzuckermessgeräte/Insulinpumpen - **Medizintechnik**
- Entwicklung eines Konfigurationstool für **Anzeigeeinstrumente**
- Entwicklung Variantenmanagementtool - **Energieversorgung**
- Eigene Entwicklung eines Testmanagementtools - **Alle Branchen**



Information to the Standard

- ❖ Automotive SPICE® is a registered trademark of VDA e.V.
- ❖ ASPICE 3.0 comprises PRM and PAM on one single document/
(replaces PAM 2.5 and PRM 4.5)
- ❖ Automotive SPICE 3.0 is **yet** not mandatory
- ❖ ASPICE is no longer using ISO/IEC 12207 as guidance
- ❖ Process CL and attributes adapted to
the measurement framework of ISO/IEC 33020
(*ISO 15504 Harmonisation*)

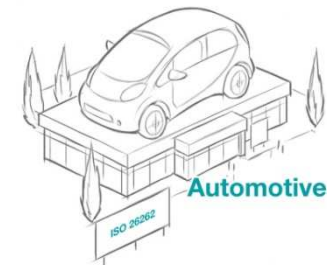
Timeline



Automotive SPICE 3.0 may be used for assessments in agreement with the sponsor.

Deployment and timeline

- ❖ Automotive SPICE 2.3 is still the version which is considered mandatory by the VDA



- ❖ Automotive SPICE versions 2.3 or 2.5 may still be used

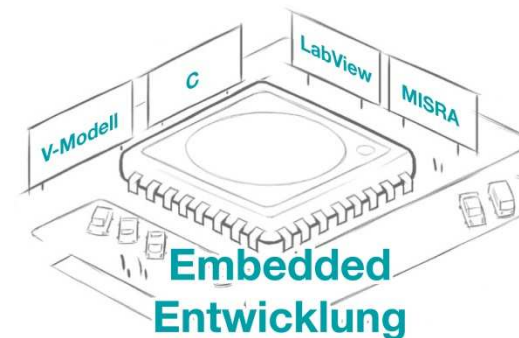
Mandatory rules for the Automotive SPICE 3.0 transition are decided by the VDA Quality Management Board with the release of the new Blue/Gold Volume by VDA, planned date is **April 2017**

Some structural changes

ASPICE 2.5	ASPICE 3.0
ENG (Engineering processes)	SYS (System Engineering), SWE (Software Engineering) acronym changed
Unit construction and unit verification are one process	Unit construction process + Unit verification process
No integration of HW and Mechanical processes	Plug in concept allows integration of HW/Mechanical processes
Known process names	The name of some processes have changed, but not their intention
Known reference standards, Traceability diagram Annex E	Updated references, Traceability diagram Annex D (will be shown on page 9)

Some examples of main changes

- No planning aspects at Level 1 (of course not in MAN.3)
-> were available in 2.5 moved to Level 2
- Proceeding is part of the strategy/plan
- Qualification is explicit required (GP2.1.6)
- Modifications on work product characteristics
- Simulation is explicit mentioned as possible verification criteria (interesting e.g. at architectural design)



Some examples of changed content

Architectural Design

Dynamic behavior has to be explicitly addressed
Evaluation of alternative solutions, according to defined criteria
Recorded evaluation result includes rational for the selection

Quality Assurance

Is simplified in general -
Independence is still required
Objectivity is added (because review of work products can't be performed independently)

Test Processes

SYS.4, SYS.5, SWE.5, SWE.6 require, that the selection of test cases is based on the test strategy for the relevant test steps

Traceability

Traceability and consistency now splitted into two Base Practices for all traceability of each process.

Refers:

- of references or
- links between work products

Consistency:

- nothing is missing (references/links)
- References/links are correct
- Proven by technical review

Supports:

- coverage analysis,
- impact analysis,
- Status tracking of requirements implementation



New tracability requirements:

- Traceability between test cases and results
- Between change requests and wp`s (affected by these changes)

Vielen Dank für Ihre Aufmerksamkeit und Fragen!

Vera Gebhardt

Hauptniederlassungsleiterin

☎ +49.611.971318-11

vera.gebhardt@tecmata.de

tecmata GmbH

Hagenauerstr. 57

D-65203 Wiesbaden

www.tecmata.de

Co-Autor:

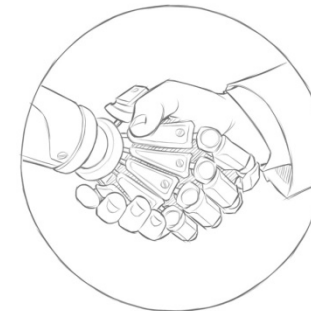
Marco Schuster

Continental Business Consulting

☎ +49.151.43856992

marco.schuster@continental-corporation.de

*Ingenieur
Know How*



*Qualitäts-
Know How*

*Prozess
Know How*